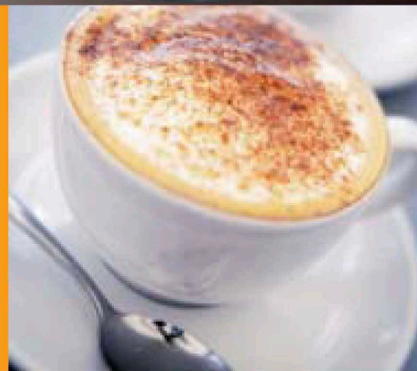


The Mini
CAROUSEL
The
CAROUSEL



enjoy the experience



DarenthMJS Ltd.

enjoy the experience

enjoy the experience



The Mini CAROUSEL

The Mini Carousel is a simple, convenient and low cost solution for the storage and dispense of 73 mm in-cup products. Capable of being either wall-mounted or free standing, where a readily available source of hot water already exists, this delightfully simple storage unit is an ideal introduction to the total convenience of the in-cup system.

7 selection categories

210 in-cup total capacity



Standard
Mini Carousel



Handy storage compartment on the top is ideal for sugar sachets, etc.

OTHER FEATURES

Revolving action for easy product selection

Optional wall mounting bracket

Stylish good looks

Delightfully simple

Low cost

The **CAROUSEL**

An ingenious concept together with real flair makes the Carousel an ideal solution for the smaller establishment that needs a versatile, practical and attractive unit. Combining an integral boiler and refillable water bottle, the carousel is the simplest possible solution for quality hot drinks.

10 selection categories

350 in-cup total capacity



Standard
machine



Carousel featuring
optional Kenco livery

OTHER FEATURES

Integral water heater

Adjustable separator mechanism for 71mm, 73mm
and 76mm cups

5 litre refillable water bottle

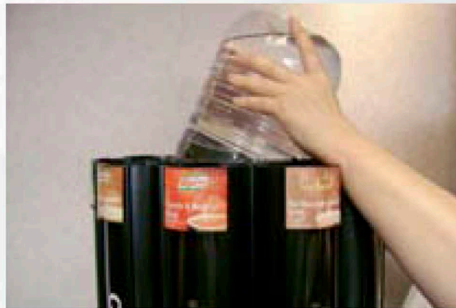
Easy to fill, clean and use

No plumbing required

The Carousel and Mini Carousel by DarenthMJS are two delightfully simple pieces of equipment, ideal to provide users with an introduction to the ultimate convenience of in-cup products.



Handy storage compartment on Mini Carousel, ideal for sugar sachets



Easy to load, refillable water container on Carousel

The Carousel is available in a range of graphics and branding options. Please ask your DarenthMJS authorised dealer for latest details.



Both machines allow users to enjoy delicious in-cup drinks

The Mini
CAROUSEL
The
CAROUSEL



TOTAL DESIGN & MANUFACTURE

CAROUSEL

CAPACITY

Selections:
10

In-cup (71, 73 or 76mm):
35 per selection = 350 cups total

Sealed cups (73mm):
21 per selection = 210 cups total

WATER SUPPLY:

Refillable 5 ltrs water container
Spare bottles available

POWER REQUIREMENTS:

240 V, 50 Hz, single phase
2.5 KW, 13 A plug fuse
Machine fitted with 1.7 metre mains lead

OPTIONS:

Additional water storage containers
Small base cabinet

DIMENSIONS (WxHxD):

Machine: 480mm x 645mm x 480mm

WEIGHT:

Machine: 17Kg



TOTAL DESIGN & MANUFACTURE

MINI CAROUSEL

CAPACITY

Selections:
7

In-cup (73mm):
30 per selection = 210 cups total

Sealed cups (73mm):
19 per selection = 133 cups total

Sugar:
Sachet holder incorporated into lid

WATER SUPPLY:

None - machine is cup dispenser only

POWER REQUIREMENTS:

None

OPTIONS:

Wall mounting bracket
Small base cabinet

DIMENSIONS (WxHxD):

Machine: 260mm x 512mm x 260mm

WEIGHT:

Machine: 5Kg



For further information and advice on the extensive range of total refreshment solutions manufactured by DarenthMJS Limited, please contact your local authorised dealer.



DarenthMJS recommend and supply the complete range of EVERPURE water filtration technology.



DarenthMJS Ltd have a policy of continual improvement and reserve the right to modify and/ or change specifications without notice.

All dimensions and capacities shown are approximate and for guidance only. E & OE.

